



范陳會計師行有限公司  
Fan, Chan & Co. Limited

## INDEPENDENT AUDITOR'S REPORT

TO THE BOARD OF DIRECTORS OF CHRISTIAN & MISSIONARY ALLIANCE CHURCH UNION  
HONG KONG LIMITED

基督教宣道會香港區聯合有限公司

### Opinion

We have audited the financial statements of Christian & Missionary Alliance Church Union Hong Kong Limited – C & M A Social Services (the "Organization") set out on pages 4 to 28, which comprise the statement of financial position as at 31 March, 2021, and the statement of comprehensive income, statement of cash flows and statement of changes in reserves and funds for the year then ended, and notes to the financial statements, including a summary of significant accounting policies.

The financial statements of the Organization do not form part of the specified financial statements of Christian & Missionary Alliance Church Union Hong Kong Limited.

In our opinion, the financial statements give a true and fair view of the financial position of the Organization as at 31 March, 2021, and of its financial performance and its cash flows for the year then ended in accordance with Hong Kong Financial Reporting Standard for Private Entities ("HKFRS for Private Entities") issued by the Hong Kong Institute of Certified Public Accountants ("HKICPA") and have been properly prepared in accordance with the "Lump Sum Grant Manual" and complied with the requirements as stipulated by Social Welfare Department and Community Care Fund on implementing the Community Care Fund Programme and other instructions issued by the Director of Social Welfare from time to time.

### Other Information

We have not performed any audit procedures to verify the authenticity of the supplementary and unaudited information provided by the Committee Members of the Organization in the financial statements.

### Basis for Opinion

We conducted our audit in accordance with Hong Kong Standards on Auditing ("HKSA") issued by the HKICPA. Our responsibilities under those standards are further described in the Auditor's Responsibilities for the Audit of the Financial Statements section of our report. We are independent of the Organization in accordance with the HKICPA's Code of Ethics for Professional Accountants ("the Code"), and we have fulfilled our other ethical responsibilities in accordance with the Code. We believe that the audit evidence we have obtained is sufficient and appropriate to provide a basis for our opinion.

### Responsibilities of Committee Members and Those Charged with Governance for the Financial Statements

The Committee Members of the Organization are responsible for the preparation of the financial statements that give a true and fair view in accordance with HKFRS for Private Entities issued by the HKICPA, and for such internal control as the Committee Members determine is necessary to enable the preparation of financial statements that are free from material misstatement, whether due to fraud or error.

In preparing the financial statements, the Committee Members are responsible for assessing the Organization's ability to continue as a going concern, disclosing, as applicable, matters related to going concern and using the going concern basis of accounting unless the Committee Members either intend to liquidate the Organization or to cease operations, or have no realistic alternative but to do so.

Those charged with governance are responsible for overseeing the Organization's financial reporting process.



A member of  
Nexia  
International

Rooms 1007-1012, 10/F, K. Wah Centre, 191 Java Road, North Point, Hong Kong

香港北角渣華道191號華華國際中心10樓1007-1012室

Tel: (852) 2816 3188 Fax: (852) 2891 5103 Email: fanchan@fanchan.com



范陳會計師行有限公司  
Fan, Chan & Co. Limited

## INDEPENDENT AUDITOR'S REPORT

TO THE BOARD OF DIRECTORS OF CHRISTIAN & MISSIONARY ALLIANCE CHURCH UNION  
HONG KONG LIMITED

基督教宣道會香港區聯合有限公司

### *Auditor's Responsibilities for the Audit of the Financial Statements*

Our objectives are to obtain reasonable assurance about whether the financial statements as a whole are free from material misstatement, whether due to fraud or error, and to issue an auditor's report that includes our opinion. This report is made solely to you, and for no other purpose. We do not assume responsibility towards or accept liability to any other person for the contents of this report. Reasonable assurance is a high level of assurance, but is not a guarantee that an audit conducted in accordance with HKSA's will always detect a material misstatement when it exists. Misstatements can arise from fraud or error and are considered material if, individually or in the aggregate, they could reasonably be expected to influence the economic decisions of users taken on the basis of these financial statements.

As part of an audit in accordance with HKSA's, we exercise professional judgment and maintain professional skepticism throughout the audit. We also:

- Identify and assess the risks of material misstatement of the financial statements, whether due to fraud or error, design and perform audit procedures responsive to those risks, and obtain audit evidence that is sufficient and appropriate to provide a basis for our opinion. The risk of not detecting a material misstatement resulting from fraud is higher than for one resulting from error, as fraud may involve collusion, forgery, intentional omissions, misrepresentations, or the override of internal control.
- Obtain an understanding of internal control relevant to the audit in order to design audit procedures that are appropriate in the circumstances, but not for the purpose of expressing an opinion on the effectiveness of the Organization's internal control.
- Evaluate the appropriateness of accounting policies used and the reasonableness of accounting estimates and related disclosures made by the Committee Members.
- Conclude on the appropriateness of the Committee Members use of the going concern basis of accounting and, based on the audit evidence obtained, whether a material uncertainty exists related to events or conditions that may cast significant doubt on the Organization's ability to continue as a going concern. If we conclude that a material uncertainty exists, we are required to draw attention in our auditor's report to the related disclosures in the financial statements or, if such disclosures are inadequate, to modify our opinion. Our conclusions are based on the audit evidence obtained up to the date of our auditor's report. However, future events or conditions may cause the Organization to cease to continue as a going concern.



A member of  
**Nexia**  
International

Rooms 1007-1012, 10/F., K. Wah Centre, 191 Java Road, North Point, Hong Kong.  
香港北角匯華道191號嘉華閣中心10樓1007-1012室  
Tel: (852) 2816 3188 Fax: (852) 2891 5103 Email: fanchan@fanchan.com

P. 2

CHRISTIAN & MISSIONARY ALLIANCE CHURCH UNION HONG KONG LIMITED  
- C & M A SOCIAL SERVICES  
基督教宣道會香港區聯會有限公司 - 宣道會社會服務處

STATEMENT OF COMPREHENSIVE INCOME  
FOR THE YEAR ENDED 31 MARCH, 2021

	Note	2021 HK\$	2020 HK\$
<b>Income</b>			
Social Welfare Department's subvention and grants	(4)	34,568,720	31,948,107
Education Bureau's subvention		38,727,395	38,481,032
Donations and subventions from other sources	(5)	5,202,977	7,361,355
Fee income and assistance	(6)	12,345,312	14,660,218
Programme income	(10)	364,041	2,012,716
Bank interest income		131,686	261,795
Sales and services, net	(9)	-	92,832
Recapitalisation		638,398	-
Administrative fee income		3,445,063	1,527,039
Sundry income		102,535	124,388
<b>Total income</b>		<b>95,526,127</b>	<b>96,469,482</b>
<b>Deduct:</b>			
<b>Expenditure</b>			
Administrative expenses		1,692,881	1,453,272
Audit fee		120,570	116,850
Building management fee		601,546	624,044
Other expenditure for designated donations		2,659,301	677,917
Central items		635,503	602,924
Depreciation and amortization	(11)	3,115,403	5,191,536
Food		236,170	1,293,451
Government rent and rates		446,758	574,288
Insurance premium		725,748	708,714
Personnel emoluments	(7)	74,447,801	70,528,590
Programme expenses	(10)	2,208,361	4,241,708
Rental expenses		1,745,070	1,841,064
Repairs and maintenance		1,227,823	1,729,628
Sales and services, net	(9)	716	-
Social Welfare Development Fund Expenditure		-	119,870
Store and equipment		678,547	820,247
Sundry expenses		597,532	341,374
Transportation and travelling		68,064	77,651
Utilities		603,708	1,289,356
Written off of property, plant and equipment		5,876	9,913
<b>Total expenditure</b>		<b>91,817,378</b>	<b>92,242,397</b>
<b>Surplus for the year</b>		<b>3,708,749</b>	<b>4,227,085</b>

CHRISTIAN & MISSIONARY ALLIANCE CHURCH UNION HONG KONG LIMITED  
- C & M A SOCIAL SERVICES  
基督教宣道會香港區聯合會有限公司 - 宣道會社會服務處

STATEMENT OF FINANCIAL POSITION  
FOR THE YEAR ENDED 31 MARCH, 2021

	Note	2021 HK\$	2020 HK\$
<b>Non-current assets</b>			
Property, plant and equipment	(11)	6,979,951	8,050,360
<b>Current assets</b>			
Inventories	(12)	134,466	88,588
Deposits, prepayment and other receivables	(13)	1,910,669	1,677,234
Amounts due from related parties	(18)	8,277	32,408
Cash and cash equivalents	(14)	73,297,232	65,362,093
		75,350,644	67,160,323
<b>Current liabilities</b>			
Account and other payables		2,920,823	2,441,763
Receipt in advance		9,190,445	6,481,631
		12,111,268	8,923,394
<b>Net current assets</b>		63,239,376	58,236,929
<b>Total assets less current liabilities</b>		70,219,327	66,287,289
<b>Non-current liabilities</b>			
Provision for long service payment	(15)	715,822	908,695
Block grant reserve	(16)	1,842,345	1,425,983
		2,558,167	2,334,878
<b>Net assets</b>		67,661,160	63,952,411
<b>Total reserves and funds</b>			
Accumulated general fund		1,468,170	1,977,174
Designated funds		66,192,990	61,975,237
		67,661,160	63,952,411

The financial statements were approved and authorised for issue by the Social Services Committee on 15 October, 2021 and are signed on its behalf by:

Chairman of  
Social Services Committee  
C & M A Social Services

General Secretary for  
Social Services  
C & M A Social Services

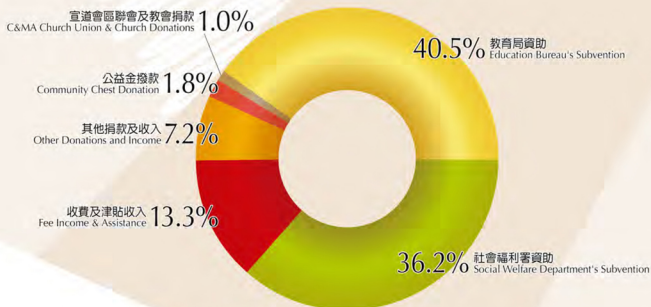


# Financial Chart for 2020/2021

## 二零二零至二零二壹年度 財務分析圖表

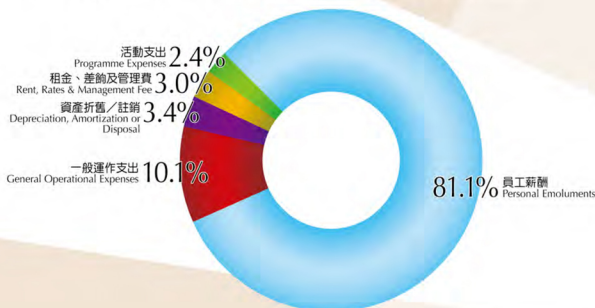
### (1) 收入分析圖 (本財政年度總收入為 \$95,526,127)

Chart of Income (Total income for this financial year is \$95,526,127)



### (2) 支出分析圖 (本財政年度總支出為\$91,817,378)

Chart of Expenditure (Total expenditure for this financial year is \$91,817,378)



The use of Lump Sum Grant Reserve  
and Provident Fund Reserve

# 整筆撥款儲備及公積金儲備使用

	整筆撥款 Lump Sum Grant	公積金 Provident Fund		總計 Total
		定影員工 Snapshot Staff	6.8%及其他職位 6.8% and Other Posts	
	\$	\$	\$	\$
資助收入 Subvention Received	25,232,917.00	368,522.00	1,571,627.00	27,173,066.00
其他收入 Other Income	1,036,431.11	-	3,782.36	1,040,213.47
(A):	26,269,348.11	368,522.00	1,575,409.36	28,213,279.47
薪酬支出 Personal Emoluments Paid	23,651,008.52	368,521.50	1,403,102.29	25,422,632.31
其他支出 Other Charges Paid	2,123,239.09	-	-	2,123,239.09
(B):	25,774,247.61	368,521.50	1,403,102.29	27,545,871.40
是年盈餘 Surplus for the Year (A) - (B)	495,100.50	0.50	172,307.07	667,408.07
加 Add : 承上年盈餘 Surplus b/f	9,153,525.32	79,207.10	3,930,399.11	13,163,131.53
調整 Adjustment :	-	-	19,930.00	19,930.00
減 Less : 退回政府 Refund to Government	7,629.34	79,207.00	-	86,836.34
盈餘轉往下一年 Surplus c/f	9,656,255.16	0.60	4,122,636.18	13,763,633.26

註：整筆撥款的周年財務報告已上載至本機構網站，網址是 <http://www.cmasshk.org/Budget-Report>

Remarks: The Annual Financial Report of Lump Sum Grant has been uploaded to our website, the link is <http://www.cmasshk.org/Budget-Report>.

# The List of Directors & Committee Members

## 各委員會成員名單

(截至二零二一年三月三十一日)

### 執行委員會

簡耀堂牧師 (主席)	湯頌年牧師	潘國賢牧師	梁子勇牧師	阮成國牧師	游淑儀牧師
周家和牧師 (第一副主席)	楊靖紀牧師	張雲生牧師	譚廣海牧師	陳茹九牧師	黃家輝牧師
王祢福社長 (第二副主席)	鄧德根先生	王榮剛先生	葉松茂博士	蘇國生博士	

### 社會服務委員會

陳茹九牧師 (主席)	范國光牧師	黃偉雄牧師	潘國賢牧師	劉立武牧師	譚廣海牧師
楊靖紀牧師 (副主席)	朱海明先生	何祐康先生	丘澤明先生	徐滿霖先生	鍾煥璋女士
羅朝虹女士	張一慧女士				

### 幼兒學校校董會

陳茹九牧師 (主席)	范國光牧師	潘國賢牧師	陸正雄牧師	劉立武牧師	楊黃蕙吟博士
羅朝虹女士	郭楚翹校長	劉國華先生 (校監)			

### 人力資源及財務小組

楊靖紀牧師 (主席)	黃偉雄牧師	鍾煥璋女士	何澤信先生	何祐康先生	劉國華先生
吳燕卿女士					

### 服務發展小組

陳茹九牧師 (召集人)	張一慧女士	徐滿霖先生	劉國華先生	吳燕卿女士	布敏姿女士
-------------	-------	-------	-------	-------	-------

### 支援委員會

<b>基督教宣道會利東幼兒學校</b>					
陳茹九牧師 (主席)	韓思聰傳道	郭月萍女士	劉淑華女士	潘美蘭女士	黃仲輝先生

<b>基督教宣道會寶湖幼兒學校</b>					
丘澤明傳道 (主席)	李家樂先生	徐曉惠小姐			

<b>基督教宣道會海怡幼兒學校</b>					
劉立武牧師 (主席)	蔡月明傳道	梁文姬小姐	吳素雲女士		

<b>基督教宣道會天頌幼兒學校</b>					
陸正雄牧師 (主席)	黃燕濱傳道	吳玉萍小姐			

<b>基督教宣道會沙田幼兒學校</b>					
陳嘉恩傳道 (委員)					

<b>基督教宣道會長亨長者鄰舍中心</b>					
梁兆業先生 (主席)	范宇軒傳道	曾耀賢先生			

<b>基督教宣道會利福長者鄰舍中心</b>					
潘國賢牧師 (主席)	黃小燕傳道	郭紫燕女士	區淑玲女士		

<b>基督教宣道會油麗長者鄰舍中心</b>					
黃偉雄牧師 (主席)	劉淑霞女士	李天佑先生			

<b>基督教宣道會白普理景林長者鄰舍中心</b>					
石海亮先生 (主席)	黃建民牧師	羅七正先生			

<b>基督教宣道會海濱花園耆學軒</b>					
陳黃雪梅女士 (主席)	何欣霖傳道	邱淑玲女士	于秉權先生	謝玉貞女士	

<b>基督教宣道會翠樂長者睦鄰中心</b>					
楊靖紀牧師 (主席)	尹志明先生	胡向欣女士			

# 本會服務單位通訊錄及單位主管名單

## 宣道會社會服務處

九龍大角咀海輝道11號奧海城一期政府服務中心閣樓  
電話：2787-5212 傳真：2395-2855  
電郵：cao@cmasshk.org  
社會服務總幹事：劉國華先生

## C & M A Social Services

M/F., G/C Bldg., Olympian City (Phase I), 11 Hoi Fai Road, Tai Kok Tsui, Kowloon.  
Tel: 2787-5212 Fax: 2395-2855  
E-mail: cao@cmasshk.org  
General Secretary for Social Services: Mr. LAU Kwok-wa

## 幼兒學校

### 基督教宣道會富山幼兒學校

九龍富山邨富信樓地庫壹1-6號地下  
電話：2351-2833 傳真：2320-5201  
電郵：fushan@cmasshk.org  
校長：王佩珠校長（至31.8.2021）  
校長：吳鳳珊校長（由1.9.2021）

## Nursery Schools

### Christian & Missionary Alliance Fu Shan Nursery School

No. 1-6 Lower Ground 1, Fu Shun House, Fu Shan Estate, Kowloon.  
Tel: 2351-2833 Fax: 2320-5201  
E-mail: fushan@cmasshk.org  
Principal: Ms. Wong Pui Chu (to 31.8.2021)  
Principal: Ms. Ng Fung Shan (from 1.9.2021)

### 基督教宣道會沙田幼兒學校

新界沙田沙角邨金鷺樓地下1-13號  
電話：2648-9486 傳真：2686-1902  
電郵：shatin@cmasshk.org  
校長：何婉嫻校長

### Christian & Missionary Alliance Shatin Nursery School

1-13, G/F, Oriole House, Sha Kok Estate, Shatin, N.T.  
Tel: 2648-9486 Fax: 2686-1902  
E-mail: shatin@cmasshk.org  
Principal: Ms. Ho Yuen Han

### 基督教宣道會利東幼兒學校

香港鴨脷洲利東邨東興樓地下102-112號  
電話：2871-2791 傳真：2874-9407  
電郵：leitung@cmasshk.org  
校長：陳秀賢校長

### Christian & Missionary Alliance Lei Tung Nursery School

102-112, G/F, Tung Hing House, Lei Tung Estate, Ap Lei Chau, Hong Kong.  
Tel: 2871-2791 Fax: 2874-9407  
E-mail: leitung@cmasshk.org  
Principal: Ms. Chan Sau Yin

### 基督教宣道會海怡幼兒學校

香港鴨脷洲怡南路海怡半島第四期29座高層地面  
電話：2873-3026 傳真：2873-0754  
電郵：southhorizons@cmasshk.org  
校長：莫綺華校長

### Christian & Missionary Alliance South Horizons Nursery School

Upper Ground Floor, Block 29, Phase IV, South Horizons, Yi Nam Road, Ap Lei Chau, Hong Kong.  
Tel: 2873-3026 Fax: 2873-0754  
E-mail: southhorizons@cmasshk.org  
Principal: Ms. Mok Yee Wah

### 基督教宣道會寶湖幼兒學校

新界大埔寶湖道3號寶湖花園地下106號舖  
電話：2650-8223 傳真：2650-8330  
電郵：plovercove@cmasshk.org  
校長：魏妃彩校長

### Christian & Missionary Alliance Plover Cove Nursery School

Shop 106, Level 1, Plover Cove Garden, 3 Plover Cove Road, Tai Po, N.T.  
Tel: 2650-8223 Fax: 2650-8330  
E-mail: plovercove@cmasshk.org  
Principal: Ms. Ngai Fei Choi

### 基督教宣道會天頌幼兒學校

新界元朗天水圍天頌苑服務設施大樓一字樓  
電話：2253-0100 傳真：2253-0313  
電郵：tinchung@cmasshk.org  
校長：文鳳和校長

### Christian & Missionary Alliance Tin Chung Nursery School

1/F, Ancillary Facilities Block, Tin Chung Court, Tin Shui Wai, Yuen Long, N.T.  
Tel: 2253-0100 Fax: 2253-0313  
E-mail: tinchung@cmasshk.org  
Principal: Ms. Man Fung Wo

## 長者中心

### 基督教宣道會長亨長者鄰舍中心

新界青衣長亨邨長亨商場一樓101室  
新界青衣長亨邨俊樓B翼地下11室  
電話：2432-7232 傳真：2435-7756  
電郵：cheunghang@cmaashk.org  
中心主任：陳慧賢女士

### 基督教宣道會白普理景林長者鄰舍中心

新界西貢將軍澳景林邨景林鄰里社區中心地下  
電話：2703-5123 傳真：2703-7270  
電郵：kinglam@cmaashk.org  
中心主任：陳佩菁女士

### 基督教宣道會油麗長者鄰舍中心

九龍油塘油麗邨翠麗樓地下  
電話：2346-3231 傳真：2775-2557  
電郵：yaulai@cmaashk.org  
中心主任：胡月嫦女士

### 基督教宣道會利福長者鄰舍中心

香港鴨脷洲邨利寧樓地下29號  
電話：2552-1115 傳真：2518-7812  
電郵：leifook@cmaashk.org  
中心主任：鄧志崗先生（至29.8.2021）  
中心主任：曾偉能先生（由30.8.2021）

### 基督教宣道會海濱花園耆學軒

新界荃灣海濱花園怡樂徑15-16座平台D1樓  
電話：2406-0201 傳真：2406-7844  
電郵：rivieragardens@cmaashk.org  
中心主任：吳燕卿女士

### 基督教宣道會翠樂長者睦鄰中心

香港柴灣翠樂邨翠綠樓地下  
電話：2814-9701 傳真：2555-3493  
電郵：tsuilok@cmaashk.org  
中心主任：吳燕卿女士

## Elderly Centres

### C & M A Cheung Hang Neighbourhood Elderly Centre

Shop No. 101, First Floor, Cheung Hang Shopping Centre, Cheung Hang Estate, Tsing Yi, N.T.  
Unit 11, G/F, Wing B, Hang Chun House, Cheung Hang Estate, Tsing Yi, N.T.  
Tel: 2432-7232 Fax: 2435-7756  
E-mail: cheunghang@cmaashk.org  
Centre-in-charge: Ms. Chan Wai Yin

### C & M A Bradbury King Lam Neighbourhood Elderly Centre

G/F, King Lam Neighbourhood Community Centre, King Lam Estate, Tseung Kwan O, Sai Kung, N.T.  
Tel: 2703-5123 Fax: 2703-7270  
E-mail: kinglam@cmaashk.org  
Centre-in-charge: Ms. Chan Pui Ching

### Christian & Missionary Alliance Yau Lai Neighbourhood Elderly Centre

G/F, Tsui Lai House, Yau Lai Estate, Yau Tong, Kowloon.  
Tel: 2346-3231 Fax: 2775-2557  
E-mail: yaulai@cmaashk.org  
Centre-in-charge: Ms. Wu Yuet Sheung

### C & M A Lei Fook Neighbourhood Elderly Centre

Unit 29, G/F, Lei Ning House, Ap Lei Chau Estate, Hong Kong.  
Tel: 2552-1115 Fax: 2518-7812  
E-mail: leifook@cmaashk.org  
Centre-in-charge: Mr. Tang Chi Kong (to 29.8.2021)  
Centre-in-charge: Mr. Tsang Wai Nun (from 30.8.2021)

### C & M A Riviera Gardens Elderly Learning Centre

Podium D, Block 15-16, Yi Lok Path, 1/F (UG) Riviera Gardens, Tsuen Wan, N.T.  
Tel: 2406-0201 Fax: 2406-7844  
E-mail: rivieragardens@cmaashk.org  
Centre-in-charge: Ms. Ng Yin Hing

### C & M A Tsui Lok Good Neighbours Centre for the Elderly

G/F, Tsui Lok House, Tsui Lok Estate, Chai Wan, Hong Kong.  
Tel: 2814-9701 Fax: 2555-3493  
E-mail: tsuilok@cmaashk.org  
Centre-in-charge: Ms. Ng Yin Hing



## 本會服務單位通訊錄及單位主管名單

### 自修中心

#### 宣道會白普理葵芳自修中心

新界葵涌葵芳邨葵安樓地下1-4號

電話：2423-0526 傳真：2429-0502

電郵：info@cmakichurch.org.hk

負責人：區佩蓮姑娘

#### 宣道會利滿自修室

香港鴨脷洲鴨脷洲邨利滿樓低座地下9-12號

電話：2814-7003 傳真：2554-9796

電郵：cmashc@cmashc.org

負責人：劉立武牧師

#### 宣道會白普理廣福自修中心

新界大埔廣福邨廣福樓地下119-122號

電話：2657-3660 傳真：2657-3662

電郵：church@kfccma.com

負責人：高志安牧師

#### 基督教宣道會朗屏堂自修室

新界元朗朗屏邨珠屏樓105-108地下

電話：2477-7410 傳真：2475-7594

電郵：cmalpchk@gmail.com

負責人：梁鳳霞牧師

#### 基督教宣道會大窩口自修室

新界葵涌大窩口邨富貴樓地下101-104室

電話：2420-6378 傳真：2481-4592

電郵：cma\_twkc@yahoo.com.hk

負責人：張雲生牧師

#### 基督教宣道會愛民堂暨自修中心

九龍何文田愛民邨愛民會堂2樓B室

電話：2715-1179 傳真：2712-6290

電郵：info@oimancma.org.hk

負責人：高景雄先生

#### 宣道會元基閣覽室

新界元朗水邊圍邨碧水樓地下12-14號

電話：2473-6650 傳真：2476-2170

電郵：info@yuenkei.org.hk

負責人：黃永強牧師

#### 宣道會白普理華貴自修中心

香港華貴邨華廉樓A翼地下

電話：2875-1774 傳真：2875-8380

電郵：sc@wkc.hk

負責人：蕭建輝先生

### Study Centres

#### C & M A Bradbury Kwai Fong Study Centre

No.1-4, G/F, Kwai On House, Kwai Fong Estate, Kwai Chung, N.T.

Tel: 2423-0526 Fax: 2429-0502

E-mail: info@cmakichurch.org.hk

In-charge: Ms. Au Pui Lin

#### C & M A Lei Moon Study Centre

No. 9-12, G/F, Lei Moon House (Low Block), Ap Lei Chau Estate, Ap Lei Chau, Hong Kong.

Tel: 2814-7003 Fax: 2554-9796

E-mail: cmashc@cmashc.org

In-charge: Rev. Lau Lap Mo

#### C & M A Bradbury Kwong Fuk Study Centre

No. 119-122, G/F, Kwong Lai House, Kwong Fuk Estate, Tai Po, N.T.

Tel: 2657-3660 Fax: 2657-3662

E-mail: church@kfccma.com

In-charge: Rev. Ko Chi On

#### Christian & Missionary Alliance Long Ping Study Centre

No. 105-108, G/F, Chu Ping House, Long Ping Estate, Yuen Long, N.T.

Tel: 2477-7410 Fax: 2475-7594

E-mail: cmalpchk@gmail.com

In-charge: Rev. Leung Fung Har

#### Christian & Missionary Alliance Tai Wo Hau Study Centre

Room 101-104, G/F, Fu Kwai House, Tai Wo Hau Estate, Kwai Chung, N.T.

Tel: 2420-6378 Fax: 2481-4592

E-mail: cma\_twhc@yahoo.com.hk

In-charge: Rev. Cheung Wan Sang

#### C & M A Oi Man Alliance Church & Study Centre

Room B, 2/F, Oi Man Estate Hall, Oi Man Estate, Ho Man Tin, Kowloon.

Tel: 2715-1179 Fax: 2712-6290

E-mail: info@oimancma.org.hk

In-charge: Mr. Ko King Hung

#### Yuen Kei Study Centre

No. 12-14, G/F, Bik Shui House, Shui Pin Wai Estate, Yuen Long, N.T.

Tel: 2473-6650 Fax: 2476-2170

E-mail: info@yuenkei.org.hk

In-charge: Rev. Wong Wing Keung

#### C & M A Bradbury Wah Kwai Study Centre

G/F, Wing A, Wah Lim House, Wah Kwai Estate, Hong Kong.

Tel: 2875-1774 Fax: 2875-8380

E-mail: sc@wkc.hk

In-charge: Mr. Siu Kin Fai

### 基督教宣道會石排灣閱覽室

香港香港仔石排灣邨碧銀樓平台P2號  
電話：2553-5019 傳真：2552-8592  
電郵：church@cmagrc.hk  
負責人：許英妍傳道

### 其他中心

#### 宣道會愉景灣堂服務中心

新界大嶼山愉景灣廣場二號  
愉景灣商務中心地下G01室  
電話：2987-8136 傳真：2987-8930  
電郵：centre@dbac.org.hk  
負責人：任俊朗先生

#### 基督教宣道會北角堂家庭服務中心

香港北角電氣道233號城市中心二樓二期  
電話：2807-5222 傳真：2234-6050  
電郵：npacfam@npac.org.hk  
負責人：朱少萍姑娘

#### 基督教宣道會屯門堂家庭服務處 - 興耀服務中心

新界屯門大興邨興耀樓地下26-29, 32-35號  
電話：2464-8152 傳真：2464-8155  
電郵：cmapsc@yahoo.com.hk  
中心主任：鄧浩輝先生

#### 宣道會沙田堂社區服務中心

新界沙田愉田苑愉悅閣地下  
電話：2648-9281 傳真：2635-4795  
電郵：centre@shatinalliance.org.hk  
中心主任：盧夢鳴姑娘（至31.5.2021）  
中心主任：戴育明姑娘（由1.6.2021）

#### 基督教宣道會華基青年中心

香港華富邨華基樓620-624室  
電話：2551-6629 傳真：2550-5664  
電郵：wkcentre@wahkeechurch.org.hk  
中心主任：黎少慧姑娘

#### 宣道會元基家庭服務中心

新界元朗康樂路8號康樂廣場2樓  
電話：2470-2132 傳真：2470-2810  
電郵：yuenkeifsc@yuenkei.org.hk  
負責人：黃永強牧師

#### 基督教宣道會兒童成長及支援中心

九龍大角咀海輝道11號  
奧海城一期政府服務中心閣樓  
電話：2271-4513 傳真：2395-2855  
電郵：cdsc@cmasshk.org  
負責人：吳燕卿女士

#### 宣道會康怡堂家庭服務中心

香港鯉魚涌基利路9號太明樓地下  
電話：2516-5113 傳真：2516-5505  
電郵：fsc@kac.org.hk  
負責人：張偉昌牧師

### Christian & Missionary Alliance Shek Pai Wan Study Centre

Unit 2, P/F, Pik Ngan House, Shek Pai Wan Estate, Aberdeen, Hong Kong.  
Tel: 2553-5019 Fax: 2552-8592  
E-mail: church@cmagrc.hk  
In-charge: Ms. Hui Ying Yin

### Others

#### Discovery Bay Alliance Church Community Centre

Unit C01, G/F, Discovery Bay Office Centre,  
No.2, Plaza Lane, Discovery Bay, Lantau Island, N.T.  
Tel: 2987-8136 Fax: 2987-8930  
E-mail: centre@dbac.org.hk  
In-charge: Mr. Yam Chun Long

#### North Point Alliance Church Family Service Centre

Phase 2, 2/F, Maximall, 233 Electric Road, North Point, Hong Kong.  
Tel: 2807-5222 Fax: 2234-6050  
E-mail: npacfam@npac.org.hk  
In-charge: Ms. Chu Siu Ping, Sylvia

#### Christian & Missionary Alliance Tuen Mun Church Family Services - Hing Yiu Service Centre

G/F, No. 26-29, 32-35, Hing Yiu House, Tai Hing Estate, Tuen Mun, N.T.  
Tel: 2464-8152 Fax: 2464-8155  
E-mail: cmapsc@yahoo.com.hk  
Centre-in-charge: Mr. Tang Ho Fai

#### Shatin Alliance Community Services Centre

G/F, Yue Yuet House, Yue Tin Court, Shatin, N.T.  
Tel: 2648-9281 Fax: 2635-4795  
E-mail: centre@shatinalliance.org.hk  
Centre-in-charge: Ms. Lo Mung Ming, Miranda (to 31.5.2021)  
Centre-in-charge: Ms. Tai Yung Ming, Sylvia (from 1.6.2021)

#### Christian & Missionary Alliance Wah Kee Church Youth Centre

Room 620-624, Wah Kee House, Wah Fu Estate, Hong Kong.  
Tel: 2551-6629 Fax: 2550-5664  
E-mail: wkcentre@wahkeechurch.org.hk  
Centre-in-charge: Ms. Lai Siu Wai

#### Christian & Missionary Alliance Yuen Kei Family Service Centre

2/F, Hong Lok Square, No. 8, Hong Lok Road, Yuen Long, N.T.  
Tel: 2470-2132 Fax: 2470-2810  
E-mail: yuenkeifsc@yuenkei.org.hk  
In-charge: Rev. Wong Wing Keung

#### Christian & Missionary Alliance Children Development and Support Centre

M/F, GIC Bldg., Olympic City (Phase 1)  
11 Hoi Fai Road, Tai Kok Tsui, Kowloon.  
Tel: 2271-4513 Fax: 2395-2855  
E-mail: cdsc@cmasshk.org  
In-charge: Ms. Ng Yin Hing

#### Kornhill Alliance Church Family Services Centre

G/F, Tai Ming House, 9 Greig Road, Quarry Bay, Hong Kong.  
Tel: 2516-5113 Fax: 2516-5505  
E-mail: fsc@kac.org.hk  
In-charge: Rev. Chang Wai Cheong



## 本會服務單位通訊錄及單位主管名單

### 基督教宣道會華基堂服務中心

香港田灣石排灣道49號  
電話：2551-3683 傳真：2875-9837  
電郵：wkcentre@wahkeechurch.org.hk  
中心主任：黎少慧姑娘

### 基督教宣道會輔導成長中心

九龍太子彌敦道776-778號恒利商業大廈10樓  
電話：2397-8183 傳真：2397-8212  
電郵：cmagcc@cmasshk.org  
負責人：吳燕卿女士

### 基陸家庭服務中心

新界荃灣西樓角路1-17號新領域廣場11樓  
電話：3188-1123 傳真：2412-4230  
電郵：kyfsc@kychurch.org.hk  
負責人：蕭如發牧師

### 基督教宣道會華基堂牧師中心

香港華富邨華基樓601-606室  
電話：2538-0644 傳真：2291-4044  
電郵：wkcentre@wahkeechurch.org.hk  
中心主任：黎少慧姑娘

### 基督教宣道會五旬節堂睦鄰中心

九龍旺角西海富苑海泰閣地下15號  
電話：3689-2299 傳真：2395-6793  
電郵：pccentre@cmagc.org  
中心主任：黎少慧姑娘

### 基督教宣道會以勒堂家長資源中心

九龍鑽石山富山邨富仁樓地庫二1-2號舖  
電話：2715-2098 傳真：2715-2198  
電郵：jirehchurch@gmail.com  
負責人：郭玉璋傳道

### 芥菜種社會服務中心

新界荃灣德士古道12-18號荃灣花園商業中心二期地  
下(上層)  
電話：2612-2400 傳真：2614-0789  
電郵：mustardseedssc@gmail.com  
負責人：鄧威文先生

### 宣道會錦繡堂黃振輝社區中心

新界元朗錦繡花園金竹北路32號  
電話：2482-0343 傳真：2471-4636  
電郵：info@churchfairview.com  
負責人：曾高貴牧師

### C & M Alliance Wah Kee Church Social Services Centre

49 Shek Pai Wan Road, Tin Wan, Hong Kong.  
Tel: 2551-3683 Fax: 2875-9837  
E-mail: wkcentre@wahkeechurch.org.hk  
Centre-in-charge: Ms. Lai Siu Wai

### Christian & Missionary Alliance Personal Growth and Counselling Centre

10/F, Hanley House, 776-778 Nathan Road, Prince Edward, Kowloon.  
Tel: 2397-8183 Fax: 2397-8212  
E-mail: cmagcc@cmasshk.org  
In-charge: Ms. Ng Yin Hing

### Kei Yam Family Services Centre

11/F, Grand City Plaza, 1-17 Sai Lau Kok Road, Tsuen Wan, N.T.  
Tel: 3188-1123 Fax: 2412-4230  
E-mail: kyfsc@kychurch.org.hk  
In-charge: Rev. Siu Yu Fat

### Christian & Missionary Alliance Wah Kee Church Neighbourhood Centre

Room 601-606, Wah Kee House, Wah Fu Estate, Hong Kong.  
Tel: 2538-0644 Fax: 2291-4044  
E-mail: wkcentre@wahkeechurch.org.hk  
Centre-in-charge: Ms. Lai Siu Wai

### Christian and Missionary Alliance Pentecostal Church Neighbourhood Centre

No. 15, G/F, Hoi Tai House, Hoi Fu Court, Mongkok West, Kowloon.  
Tel: 3689-2299 Fax: 2395-6793  
E-mail: pccentre@cmagc.org  
Centre-in-charge: Ms. Lai Siu Wai

### Christian & Missionary Alliance Jireh Church Resource Centre for Parents

No. 1-2, Lower Ground 2, Fu Yan House, Fu Shan Estate, Diamond Hill, Kowloon.  
Tel: 2715-2098 Fax: 2715-2198  
E-mail: jirehchurch@gmail.com  
In-charge: Ms. Kwok Yuk Cheung

### Mustard Seed Social Service Center

U/G, Tsuen Wan Garden Commercial Centre II, 12-18 Texaco Road, Tsuen Wan, N.T.  
Tel: 2612-2400 Fax: 2614-0789  
E-mail: mustardseedssc@gmail.com  
In-charge: Mr. Tang Wai Man, Raymond

### Fairview Park Alliance Church Clifford C. F. Wong Community Centre

32 Golden Bamboo Road North, Fairview Park, Yuen Long, N.T.  
Tel: 2482-0343 Fax: 2471-4636  
E-mail: info@churchfairview.com  
In-charge: Rev. Tsang Yui Kwai

#### 泰人恩福服務中心

九龍九龍城衙前圍道35-37號1樓

電話：2718-8090 傳真：2718-8292

電郵：blessingthaisc@yahoo.com.hk

負責人：黎李翠玲傳道

#### 基督教宣道會觀塘堂家庭服務中心

九龍牛頭角定安街95-97號地下

電話：2116-4052 傳真：2757-3072

電郵：ktcfsc@yahoo.com.hk

負責人：文妙珍姑娘

#### 附屬機構

##### 宣美語言及聽覺訓練中心

九龍荔景山路272號地下

荔灣花園商場5號南段

電話：2743-7377 傳真：2370-3048

電郵：suenmei1@netvigator.com

負責人：龐劉湘文女士

#### Blessing Thai Service Centre

1/F, 35-37 Nga Tsin Wai Road, Kowloon City, Kowloon.

Tel: 2718-8090 Fax: 2718-8292

E-mail: blessingthaisc@yahoo.com.hk

In-charge: Ms. Lai Lee Chui Ling

#### Christian & Missionary Alliance Kwun Tong Church Family Service Centre

G/F., 95-97 Ting On Street, Ngau Tau Kok, Kowloon.

Tel: 2116-4052 Fax: 2757-3072

E-mail: ktcfsc@yahoo.com.hk

In-charge: Ms. Man Miu Chun, Karen

#### Affiliated Organization

##### Suen Mei Speech & Hearing Centre

Unit 5 (South Portion), G/F, Lai Chi Kok Bay Garden,

272 Lai King Hill Road, Kowloon.

Tel: 2743-7377 Fax: 2370-3048

E-mail: suenmei1@netvigator.com

In-charge: Mrs. Bessie Pang

謹此向以下團體、機構及個別人士對本服務處之大力支持與捐助致以衷心謝意：

### 2020至2021年度撥款機構及支持本會的各界人士及團體

#### 政府部門、地區團體、服務機構及學校：

民政事務處	安老事務委員會
西貢民政事務處	社會福利署
信願榮景慈善基金有限公司IN義工團	香港太陽獅子會
香港社會服務聯會	香港家庭計劃指導會將軍澳婦女會
香港專業進修學校	香港園藝治療協會
國際獅子會總會中國港澳303區第十七分域	教育局
勞工及福利局	港灣國際學校
港灣學校家長教師會	衛生署西貢區長者健康外展隊
點滴是生命	靈實白普理寶林社區健康發展中心
基督教靈實協會靈實白普理景林社區健康發展中心	

#### 商業、私人機構及個別捐助人士：

Mstore	Social Career
中華電力有限公司	友盟建築材料有限公司
民坊	金佰利香港有限公司
美國雅培製藥有限公司	香港電燈公司
海天堂有限公司	彩豐行有限公司
捷成有限公司	梁介福（斧標）藥業有限公司
清水灣鄉村俱樂部	雀巢香港有限公司
超力國際食品有限公司	維達公司
撒隆巴斯香港	

#### 各類基金：

幸福傳聲基金	香港公益金
港燈百週年紀念基金	滙豐150週年慈善計劃

#### 服務顧問：

陳銳堅醫生（老人科專科醫生）	湯秉忠醫生（老人科專科醫生）
羅玉雄博士（物理治療師）	馮婉儀女士（園藝治療師）
何美玲女士（資深護士及臨床香薰治療師）	

由於篇幅有限，恕未能盡錄所有善長芳名。本服務處謹此向各位曾協助推行服務、活動及籌款事工的義工，衷心致謝；並感謝各傳媒機構協力推廣本處的服務。

\*排名以筆劃序



基督教宣道會香港區聯會社會服務處

## 社會服務捐獻表格

### 【本會使命 Mission】

「以基督愛人精神，傳揚福音，關懷全人，服務社群」

"In the Spirit of Christ's Love, to preach the Gospel, to provide holistic care, to serve the community".

本人／本機構樂意捐助港幣

以支持貴會之服務。

I/We would like to donate HK\$ \_\_\_\_\_ to support the Social Services of C & M A.

### 【捐款方法 Methods for donation】

- ☐ 存入滙豐銀行戶口 Direct Transfer to HSBC Account No. 472-154269-001
- ☐ 劃線支票，支票祈付「基督教宣道會香港區聯會有限公司」By crossed cheque payable to "Christian & Missionary Alliance Church Union Hong Kong Limited"  
Cheque No. 支票號碼：\_\_\_\_\_
- ☐ 透過網上銀行服務的電子捐款（只恒生銀行及東亞銀行客戶適用）By eDonation of internet banking facilities (for the customers of Hang Seng Bank and Bank of East Asia only)
- ☐ 轉數快FPS：本會系統識別碼「64848104」，並在提示訊息輸入你的姓名。



- ☐ 透過線上捐款：掃描 QR Code 或  
經網址 <https://www.cmasshk.org/donation> 作出捐獻。你的資料會經捐款網頁作出記錄，所以不用寄回此捐獻封。

請將此表格連同劃線支票或銀行入數紙正本寄回本處，捐款滿港幣壹佰元或以上會獲發放正式收據。

如有任何查詢，歡迎與我們聯絡27875212。

Please send your crossed cheque or the original bank-in slip to our General Office for the issue of an official receipt.  
HK\$100.00 and over, receipt will be issued to the donor. Please feel free to contact us for any enquiries. Thank you!

### 【捐款者資料 Donor's Information】

姓名（機構名稱／所屬教會\*）

Name (Organization / Church\*): \_\_\_\_\_ 先生/太太/女士 Mr./Mrs./Ms.\*

\*請刪除不適用者 please delete as appropriate

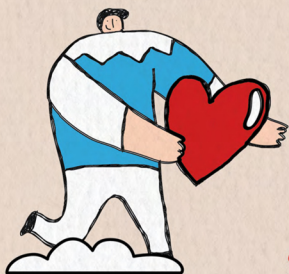
地址 Address: \_\_\_\_\_

電話 Tel: \_\_\_\_\_ 電郵 Email: \_\_\_\_\_

- ☐ 如閣下日後不希望收取任何有關本會的資訊，請於方格內劃上「x」。

If you do not like to receive C & M A's information in future, please mark "x" in the box.





基督教宣道會香港區聯會

CHRISTIAN & MISSIONARY ALLIANCE CHURCH UNION HONG KONG LIMITED



2020 -2021

## 社會服務年報

Annual Report of Social Services

九龍大角咀海輝道11號

奧海城一期政府服務中心閣樓

M/F., GIC Bldg., Olympic City (Phase I)

11 Hoi Fai Road, Tai Kok Tsui, Kowloon.

電話 Tel : 2787 5212

傳真 Fax : 2395 2855

電郵 Email : [cao@cmasshk.org](mailto:cao@cmasshk.org)

網址 Website : [www.cmasshk.org](http://www.cmasshk.org)